

CEMSAN[®]

FISH PROCESSING



Turnkey Solutions

filletting
portioning
forming
glazing

weighing
grading
batching
deheading

35 years'
experience

www.cemsan.net • info@cemsan.net

CE EAC

CEMSAN®

FISH PROCESSING



Turnkey Solutions

We have more than 550 turnkey projects all around the World with our 35-year experience in food processing market. With our knowledge of machinery and project more than a quarter-century, we are designing projects for facility, machinery manufacturing in fish processing projects. We also carry through modernisation projects for enterprise extension inquiries with our professional team and Premium machineries within our constitution.

Beginning as raw material from the first moment marine product harvested for the commercial purposes enter into fish processing facilities to the final form that will be reached to the customer, CEMSAN is conducting all the processes of designing, manufacturing, installation stays by your side as solution partner. Are you ready for exploring our machine park in European standards that will provide you maximum effect in your projects with our particular solutions?

EAC CE



www.cemsan.net
info@cemsan.net

T: +90 312 815 13 28

CEMSAN[®]

FISH PROCESSING



Turnkey Solutions

Product Acceptance Section



Fish Processing Line



Filleting Line



Grading Line



Glazing Line



Operational Inspection



Waste Systems



PRODUCT ACCEPTANCE SECTION



FULL CONTROL IN RAW MATERIAL PROCESSING

It is the acceptance center of the fishes arriving to processing facilities. In this section, fishes with tonnage are taken to the facility with automatic carrying systems. Machines that are easily usable by operators are designed with optimum speed, quality, and safety. In this sections, the machines used respectively are Tub Lift, Buffer Tank, and Carrier Z Conveyor.

PRODUCT ACCEPTANCE SECTION



Tub Lift

Technical Details

- Hydraulic system
- 2 pcs cylinder
- Hydraulic unit
- AISI 304 - 316 Quality stainless steel
- IP65 control box



Product Info

Capacity	750 Kg
Product Code	LD750-01
Capacity	1200 Kg
Product Code	LD1200-01

Buffer Tank

Technical Details

- Capacity of 1500 Kg
- Immediate water discharge system
- Inspection
- AISI 304 - 316 Quality stainless steel



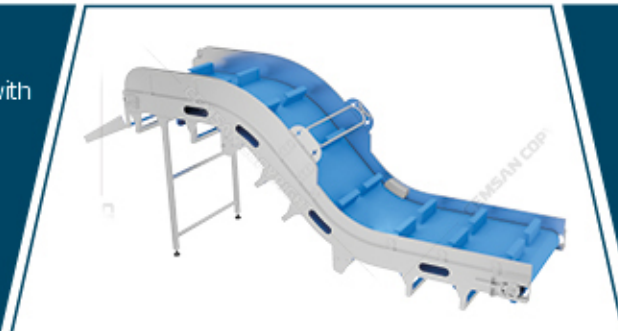
Product Info

PRODUCT	CODE
Tank	B0T-01

Z Conveyor

Technical Details

- PE Modular band compatible with food
- Gearmotor
- AISI 304 - 316 Quality stainless steel



Product Info

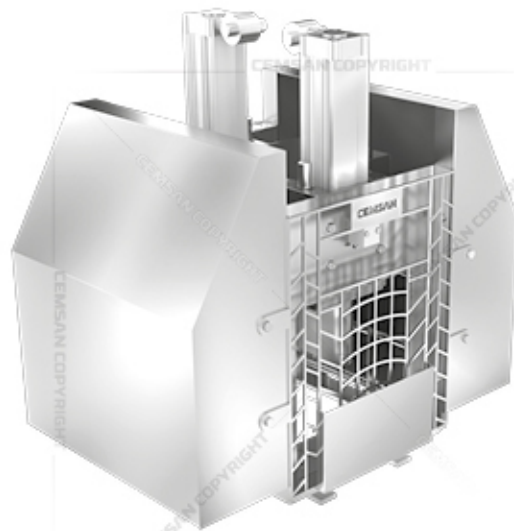
PRODUCT	CODE
Conveyor	BBK-01

FISH PROCESSING LINE



**LABOR
PRODUCTIVITY
MAXIMISATION
IN
GUTTING**

It is the section where the fishes pass from weighing, and continue with deheading and gutting processes. The machines used in this section which is the main line of the facility are designed considering the principals of speed and safety. The weighed fishes enables data analyses at the end of process by being recorded. The gutting conveyor with its innovative and advanced design provides maximum efficiency with its utilities of grading, filleting, and vacuuming.



Deheading Machine

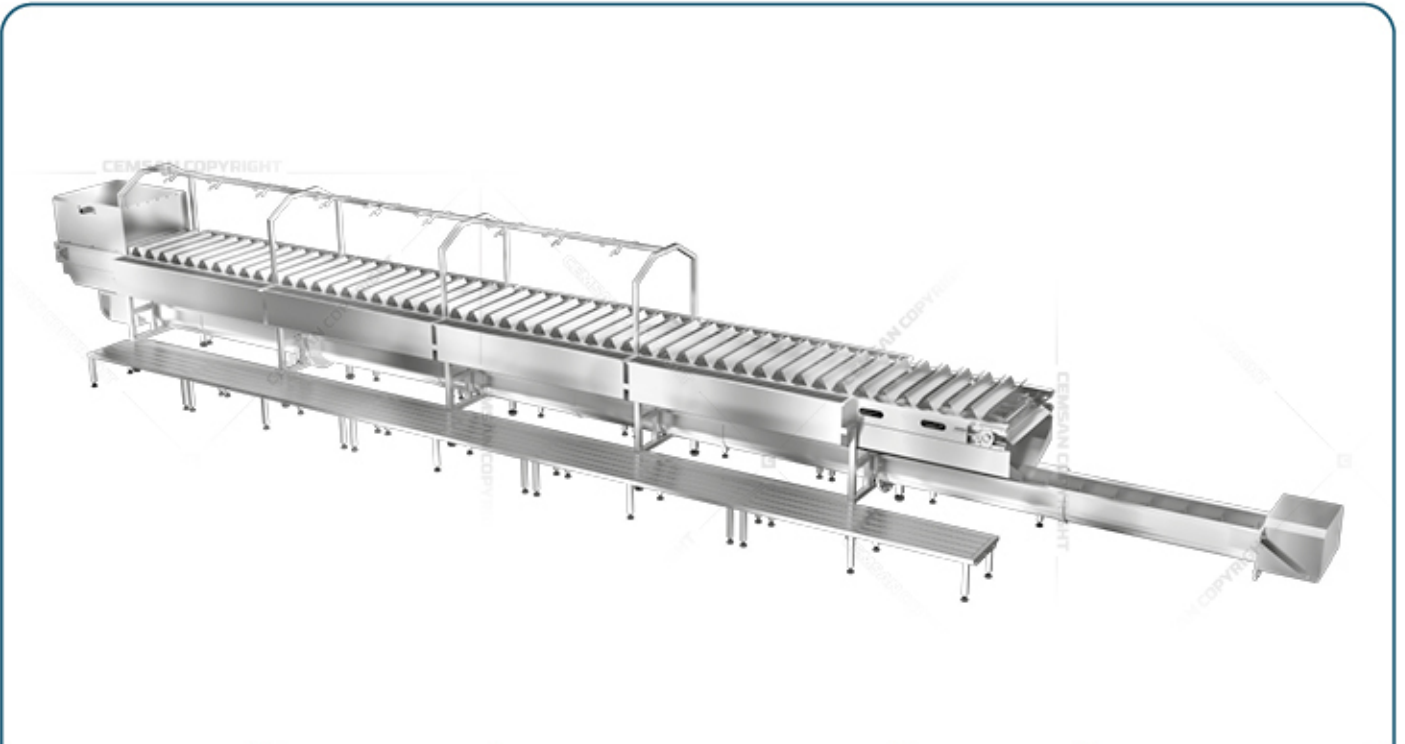
- 304-316 Quality stainless steel
- Pneumatic operating principal
- V Type blade
- Guard cage
- Control panel
- Laser with safe cutting

Technical Details

Product Info

Product Code KKP-01

FISH PROCESSING LINE



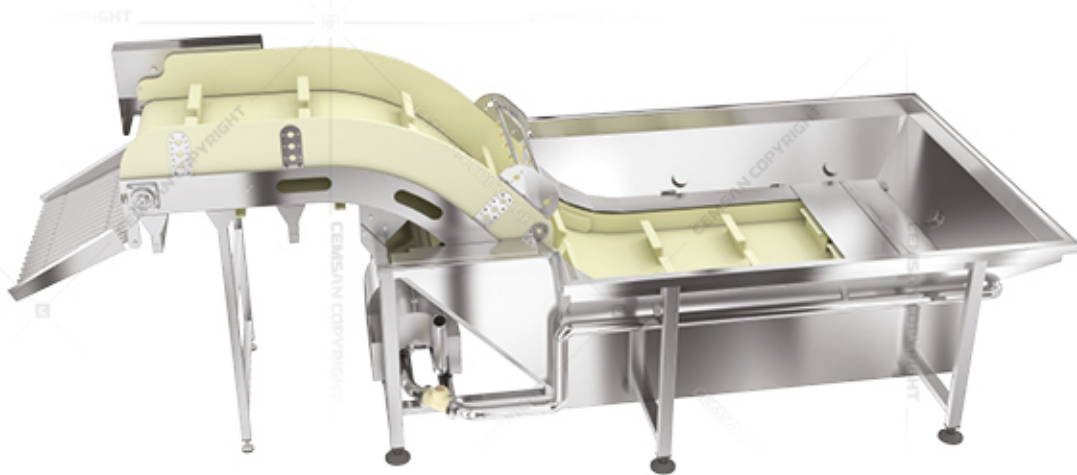
Gutting Line

Technical Details

- AISI 304-316 Quality stainless steel
- Speed control
- Gearmotor
- Waste sorting and carrying
- Water and air inlet
- Anti-slip stand
- V Type fish grading band

Product Info

Product Code SIA-01



Rinsing Tank

- Producible in desired capacity
- Immediate water discharge system
- Inspection hole
- Pump
- AISI 304 - 316 Quality stainless steel chassis

Technical Details

Product Info

Product Code | YT-01

FILLETING LINE



FULL SENSITIVITY IN FILLETING LINE

CEMSAN provides efficient and quick solutions in human health and labor productivity with its professional filleting lines in its product range of fish processing, according to various sizes and demands.

The filleting line bringing valuable meat consistence to fish is specially designed for the number of personnel. While the filleting of fish on polyethylene stands for the purpose of enabling product quality, the fillet is transferred with hygienic conveyors in compatible with food.



Filleting Line

Technical Details

- AISI 304-316 Quality stainless steel
- Polyethylene filleting table
- Modular band in compliance with food
- Waste carrier system
- Adjustable legs
- Anti-slip stand

Product Info

Table Qty	Product Code
6+6 Table	FH-12-01
8+8 Table	FH-16-01
10+10 Table	FH-20-01
12+12 Table	FH-24-01
16+16 Table	FH-32-01



GRADING LINE



FLEXIBILITY AND TRACEABILITY IN GRADING

It is the section where the fishes are sorted according to their weigh. After fishes pass from precision weighing, they are poured into scales in regard to their weigh by means of automatic lines and seperators. It is applied after either gutting conveyor or glazing line as for the facility strategy.



Grading

Technical Details

- AISI 304-316 Quality stainless steel
- Modular band
- Asynchronous motor
- Pneumatic sorting arms
- Sorting chambers
- Adjustable ball joint legs

Product Info

Product	Code
4+1 One Direction	SBT-5-01
6+1 One Direction	SBT-7-01
8+1 One Direction	SBT-9-01
8+8 Double Direction	SBC-16-01
12+12 Double Direction	SBC-24-01
14+14 Double Direction	SBC-28-01



GRADING LINE



Checkweigher

- 304-316 Quality stainless steel
- IP68 Loadcell
- Coloured touch screen
- Modular band
- Multilanguage support
- Audial alarm
- Speed adjustment

Technical Details

Product Info

Product Code CT-01



Speed Conveyor

- 304-316 Quality stainless steel
- Polyurethane band
- Speed adjustment

Technical Details

Product Info

Product Code SK-01

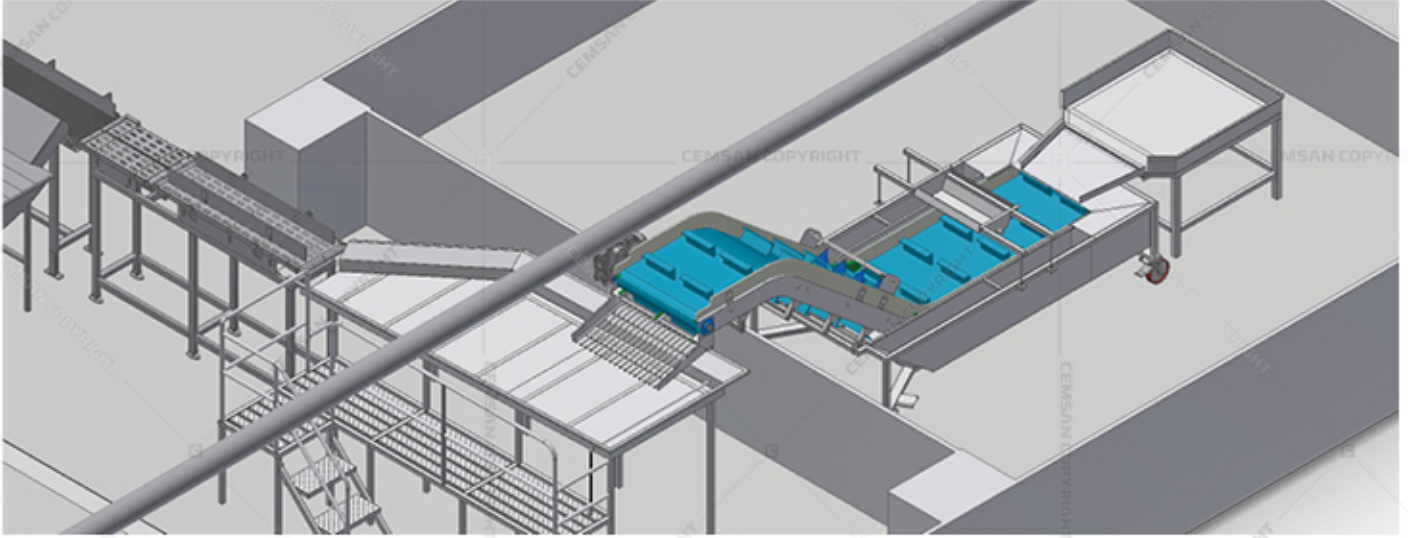
GLAZING LINE



FULL AND COMPLETE PROTECTION IN GLAZING

Glazing is the process of covering the external part of marine products with ice in the fish sector. The product that gains brightness and becomes more elegant will enable to increase its taste and shelf life. CEMSAN Glazing line will be completely integrated into your system for this application which is used frequently nowadays.

Our glazing machines work with waterfall type and sprinkling methods. They are 304 and 316 quality stainless steel. Our machines take their final form with stainless sandblasting. The oil oxidation is minimised in fishes whose air contact cut off with glazing process. The glazing rate is determined by adjusting with speed invertors.



Glazing Machine

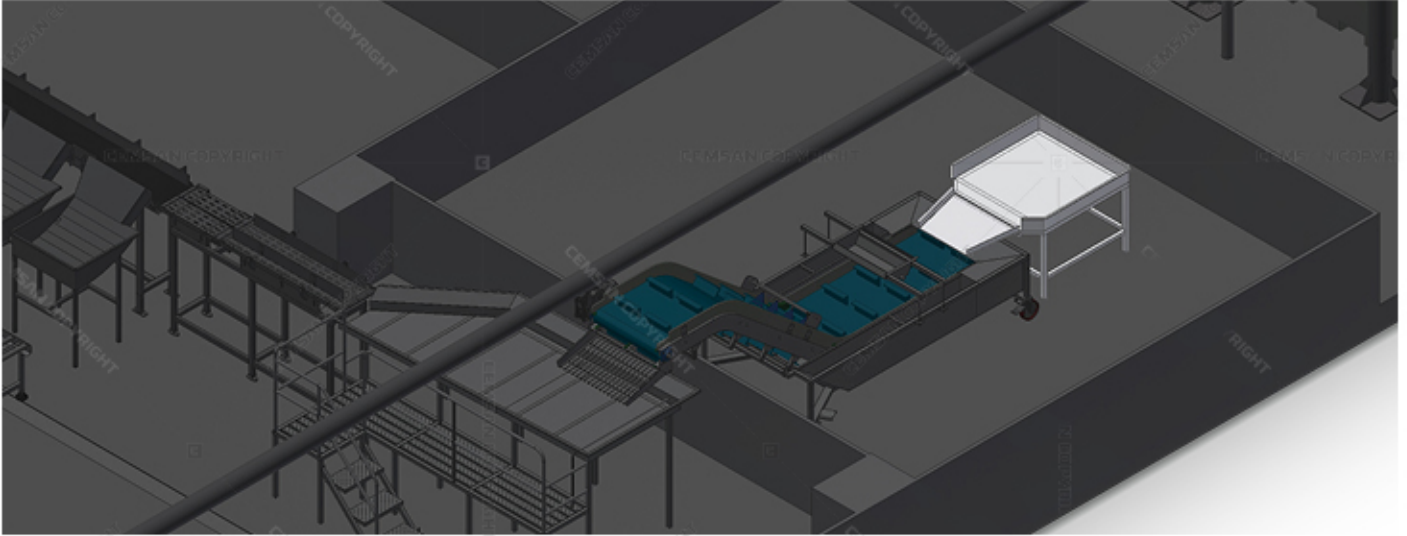
Technical Details

- PE Modular band
- Gearmotor
- Determining glazing rate by nozzles
- AISI 304 - 316 Quality stainless steel

Product Info

Product Code | GH-01

GLAZING LINE



Feeding Table Befor Glazing

- Special bended stainless sheet
- Adjustable legs
- AISI 304 - 316 Quality stainless steel

Technical Details

Product Info

Product Code GT-01



Packing and Weighing Table After Glazing

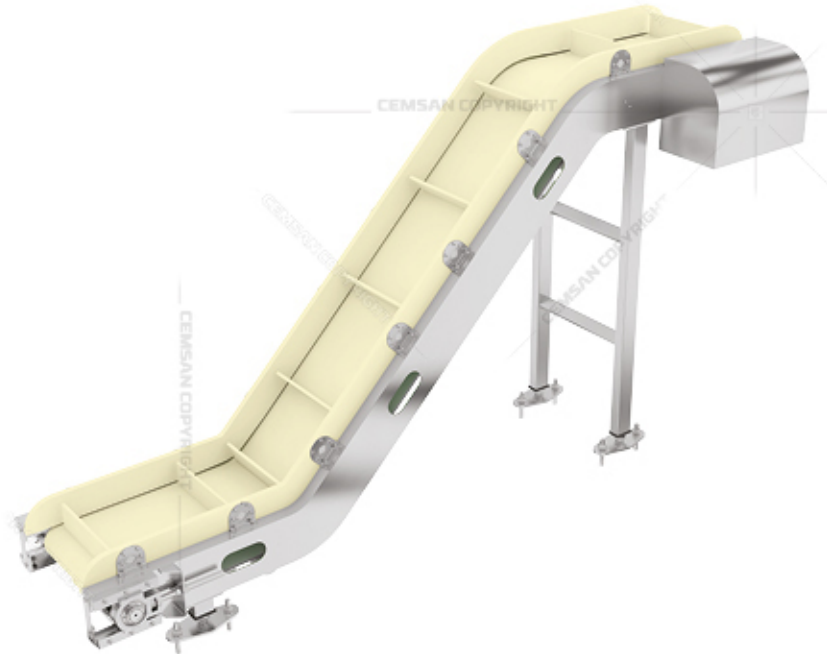
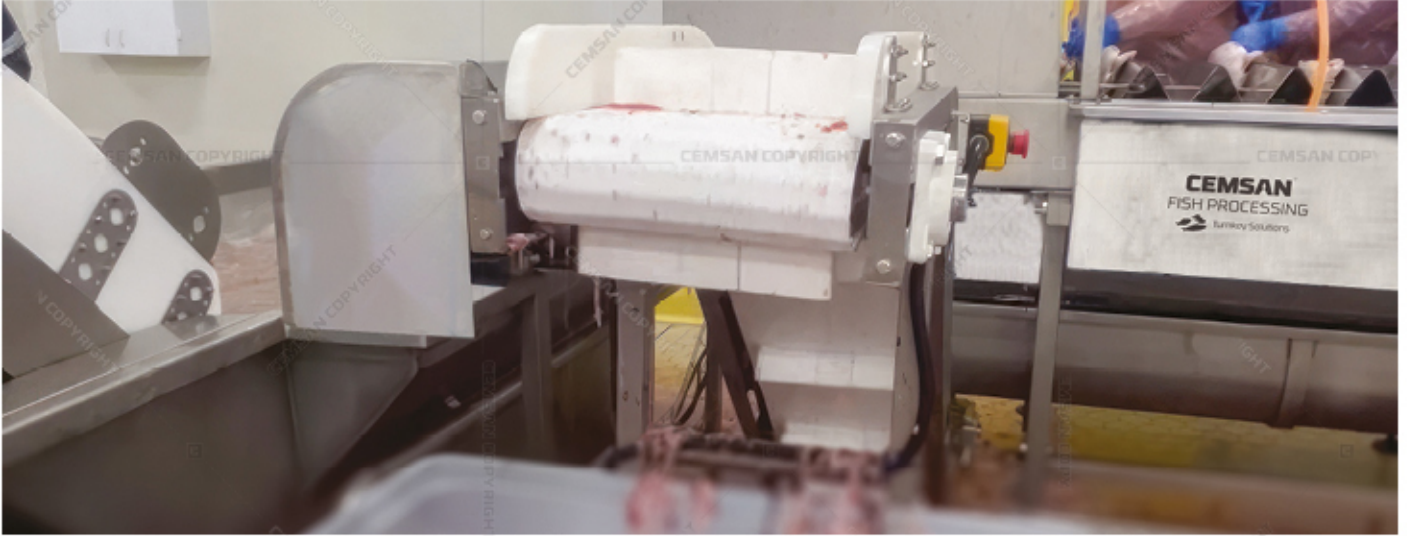
Product Info

Technical Details

- Special bent stainless sheet
- Adjustable legs
- AISI 304 - 316 Quality stainless steel
- Weighing and labelling

Product Code PS-01

WASTE CONVEYOR



Waste Conveyor

- Gearmotor
- Polyethylene modular band
- Separates solid waste of fishes
- 304-316 Quality stainless steel

Technical Details

Product Info

Product Code AK-01



Waste Tank

- Deck ladder
- 304-316 Quality stainless steel

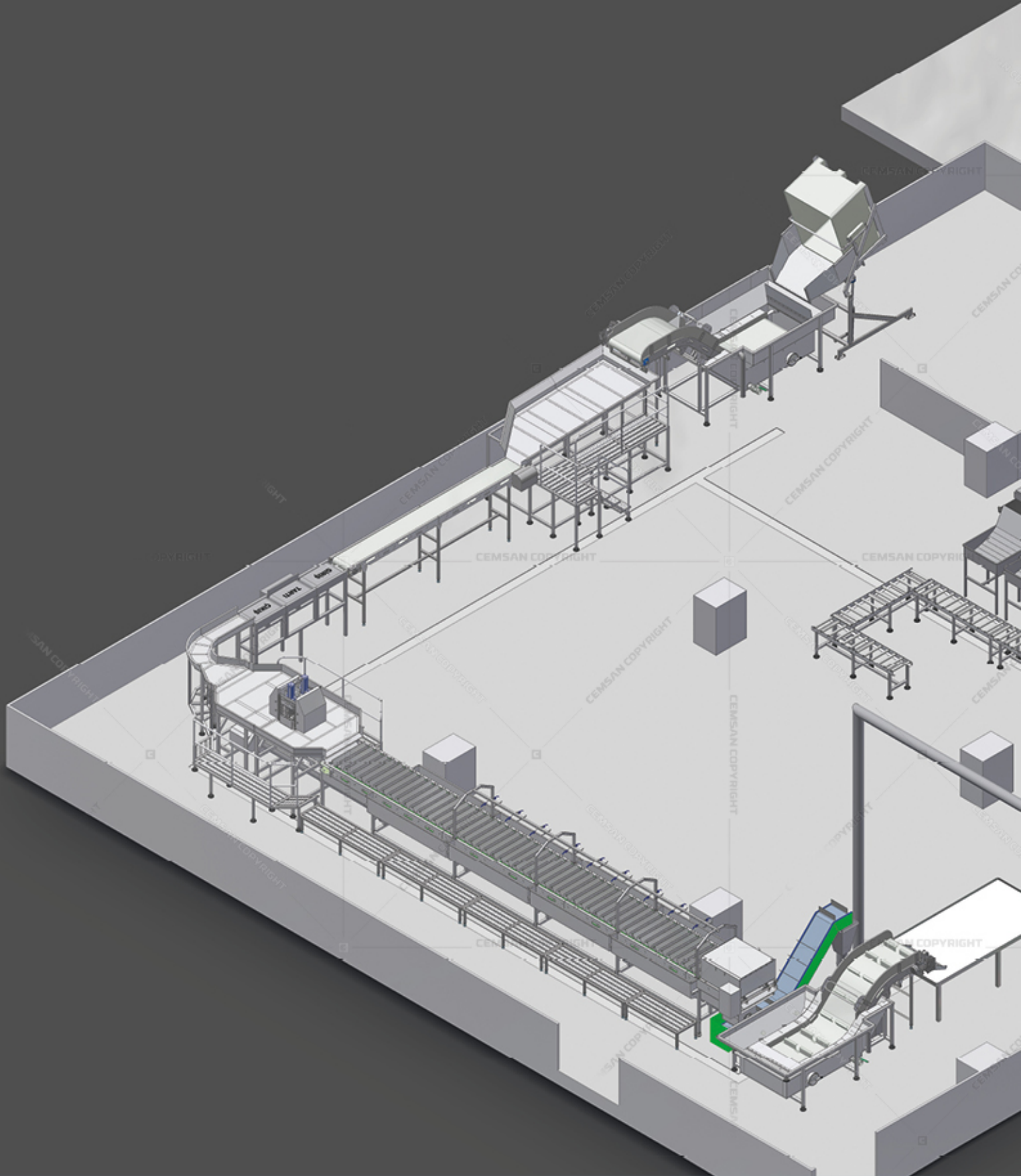
Capacity Options:

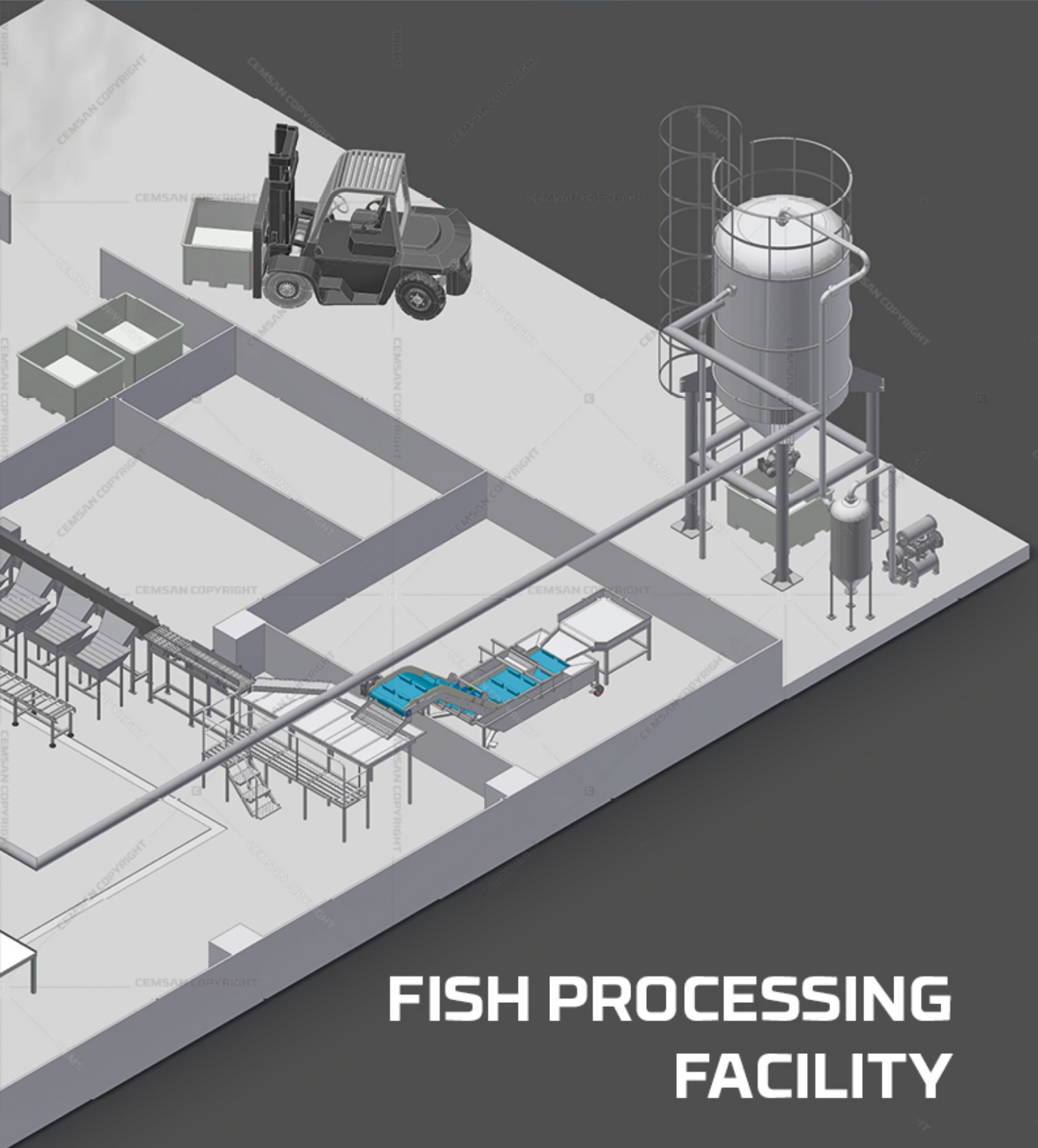
- 10 Tons
- 15 Tons

Technical Details

Product Info

Product Code | AT-01





FISH PROCESSING FACILITY

CEMSAN[®]
FISH PROCESSING



Turnkey Solutions

Sales Office

Dumlupınar Blv. Mahall Ankara,
C2 Blok No: 111 Çankaya - Ankara / TÜRKİYE
Tel: +90 312 815 13 28

Factory

Saray Mahallesi 4.Cad. No:49
Kahramankazan / Ankara / TÜRKİYE
Tel: +90 312 801 02 22
E-Mail: info@cemsan.net
www.cemsan.net

CE EAC